



# BEVERLY COMMUNITY ELECTRIC



Beverly Community Electric is a new City electricity supply program that gives residents and businesses more choice and control over how we power our community while taking a big step toward achieving our sustainability goals. The program is a group electricity purchasing program that changes the electricity supply price on your National Grid electric bill. Nearly 170 other cities and towns in Massachusetts have similar programs.

**Using the bulk buying power of our community, Beverly Community Electric provides:**

- Three new electricity supply choices.
- Stable electricity supply prices that will not change until January 2026.
- More electricity from renewable sources for less than National Grid's current residential Basic Service price.

## **Beverly Community Electric has three options.** Choose the one that's right for you.

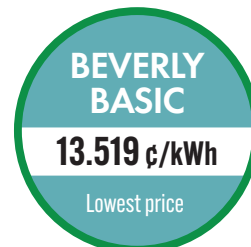
New program participants will be automatically enrolled in Beverly Standard. Beverly 100% Clean and Beverly Basic are available by request. Choose online or by phone.



DEFAULT



OPTION



OPTION



OPT OUT

**All Beverly Community Electric program prices are lower than National Grid's current residential Basic Service price and are fixed through January 2026.**

*Note that National Grid's future prices are unknown, so future savings cannot be guaranteed.*

## **Most Beverly electricity customers will be eligible for automatic enrollment.**

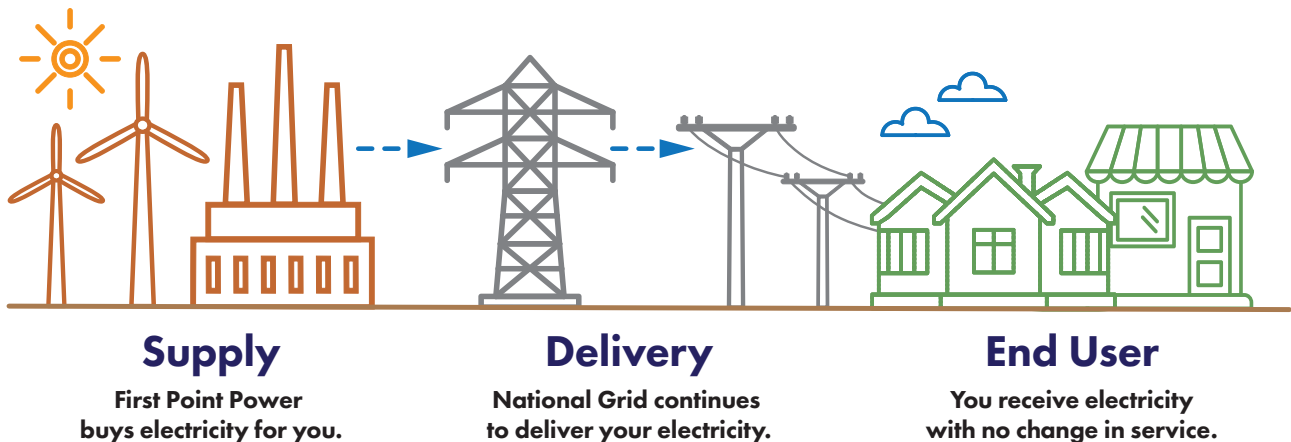
- **Have National Grid's Basic Service?**  
If you did not sign a private electricity supply contract, your account will be eligible for automatic enrollment, and you will receive a notification in the mail from the City. State law requires the automatic enrollment model, but you are free to opt out before being automatically enrolled.
- **Have a private electricity supply contract?**  
Your account will not be eligible for automatic enrollment, but you can request enrollment online at [BeverlyCommunityElectric.com](http://BeverlyCommunityElectric.com) or by contacting customer support with the City's program consultants at 1-833-350-1631.

**Participation is never required, and you are free to opt out at any time with no fee or penalty.**

That means you can opt out before being enrolled and remain with National Grid's Basic Service price, or you can try the program and opt out later at any time.

# How Beverly Community Electric Works

Beverly Community Electric changes your electricity supplier and the price that National Grid uses to calculate the Supply Services charge on your bill, which is the part of the bill where you pay for the electricity you use. But Beverly Community Electric does not replace National Grid as Beverly's electric utility, and you will remain a National Grid customer.



## Just two changes on your electric bill:

**nationalgrid**

SERVICE FOR: JOHN SMITH, 1010 ANY STREET, ANYTOWN, MA 99999  
BILLING PERIOD: Oct 29, 2023 to Nov 26, 2023  
ACCOUNT NUMBER: 99999-99999  
PLEASE PAY BY: Dec 20, 2023

**Enrollment Information**  
To enroll with a supplier or change to another supplier, you will need the following information about your account:  
Loadzone: WCMA  
Acct No: 99999-99999 Cycle: 1, SYLV

**Supply Services**  
SUPPLIER: Beverly Community Electric-First Point Power  
2000 Chapel View Blvd, Ste 450  
Cranston, RI 02920  
www.firstpointpower.com

PHONE: 1-888-875-1711 ACCOUNT NO: 1234567

Month	kWh	Month	kWh
Dec 18	1029	Jul 19	0
Jan 19	1698	Aug 19	0
Feb 19	2086	Sep 19	0
Mar 19	1262	Oct 19	0
Apr 19	327	Nov 19	176
May 19	496	Dec 19	813
Jun 19	161		

Electricity Supply: 0.13919 x 485 kWh  
**Total Supply Services: \$67.51**

**Other Charges/Adjustments**  
Paperless Billing Credit: -0.36  
**Total Other Charges/Adjustments: -\$ 0.36**

**1. Your electricity supplier will appear as Beverly Community Electric-First Point Power.**

**2. Your Electricity Supply price will change to a Beverly Community Electric price.**

**Everything else remains the same!**

### National Grid continues to:

- Deliver your electricity with no interruption and address power outages.
- Send your electric bill, and accept bill payments (this is the only electric bill you will receive as a participant).
- Provide fuel assistance, a low-income discount, and/or their Budget Plan if you are currently receiving these benefits.

The **ONLY** electricity supply program approved by and for the City of Beverly. If you don't see the City Seal, it's not from the City.

**BeverlyCommunityElectric.com • 1-833-350-1631**

