

Pepperell Community Electricity



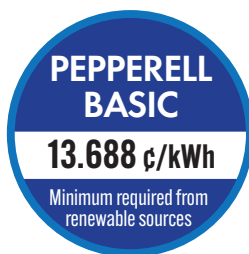
Pepperell Community Electricity is a new Town electricity supply program that gives residents and businesses more choice and control over how we power our community. The program is a group electricity purchasing program that changes the Electricity Supply price on your National Grid electric bill. Nearly 200 other cities and towns in Massachusetts have similar programs.

Using the bulk buying power of our community, Pepperell Community Electricity provides:

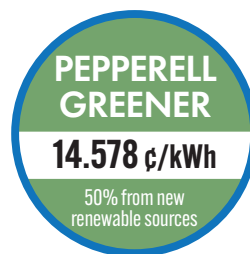
- Three new electricity supply choices.
- Fixed pricing until November 2026.
- Consumer protections, including the ability to leave the program at any time with no fee or penalty.

Pepperell Community Electricity has three options. Choose the one that's right for you.

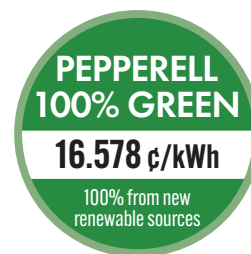
New program participants will be automatically enrolled in Pepperell Basic. Pepperell Greener and Pepperell 100% Green are available by request. Choose online or by phone.



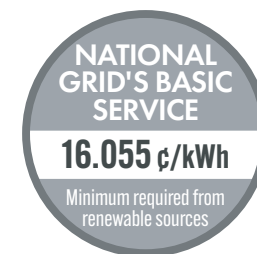
AUTO-ENROLL



OPTION



OPTION



OPT OUT

Two of the Pepperell Community Electricity prices are lower than National Grid's current residential Basic Service price and are fixed until November 2026.

Note that National Grid's future prices are unknown, so future savings cannot be guaranteed.

Most Pepperell electricity customers will be eligible for automatic enrollment.

• Have National Grid's Basic Service?

If you did not sign a private electricity supply contract, your account will be eligible for automatic enrollment, and you will receive a notification in the mail from the Town. State law requires the automatic enrollment model, but you are free to opt out before being automatically enrolled.

• Have a private electricity supply contract?

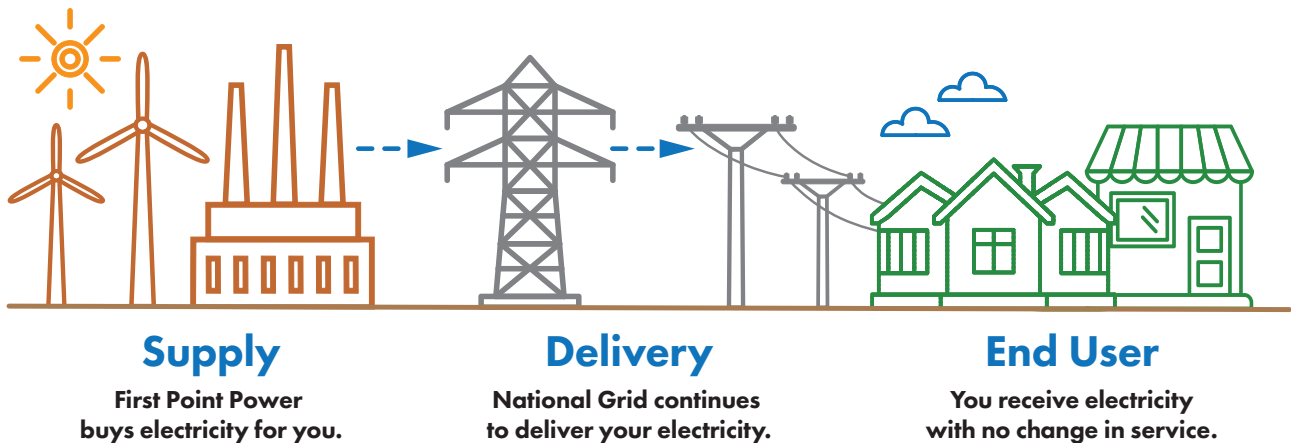
Your account will not be eligible for automatic enrollment, but you can request enrollment online at PepperellCommunityElectricity.com or by contacting customer support with the Town's program consultants at 1-844-202-6299.

Participation is never required, and you are free to opt out at any time with no fee or penalty.

That means you can opt out before being enrolled and remain with National Grid's Basic Service price, or you can try the program and opt out later at any time.

How Pepperell Community Electricity Works

Pepperell Community Electricity changes your electricity supplier and the price that National Grid uses to calculate the Supply Services charge on your bill, which is the part of the bill where you pay for the electricity you use. But Pepperell Community Electricity does not replace National Grid as Pepperell's electric utility, and you will remain a National Grid customer.



Just two changes on your electric bill:

nationalgrid		SERVICE FOR	BILLING PERIOD	PAGE 2 of 2
		JOHN SMITH	Oct 29, 2023 to Nov 26, 2023	
		1010 ANY STREET	ACCOUNT NUMBER	PLEASE PAY BY
		ANYTOWN, MA	99999-99999	Dec 20, 20
		99999		
Enrollment Information		Supply Services		
To enroll with a supplier or change to another supplier, you will need the following information about your account:		SUPPLIER		
Loadzone: WCMA		First Point Power - Pepperell Community Elec		
Acct No: 99999-99999 Cycle: 1, SYLV		2000 Chapel View Blvd, Ste 450		
		Cranston, RI 02920		
Electric Usage History		PHONE		
Month	kWh	Month	kWh	ACCOUNT NO
Dec 18	1029	Jul 19	0	1234567
Jan 19	1698	Aug 19	0	
Feb 19	2086	Sep 19	0	
Mar 19	1262	Oct 19	0	
Apr 19	327	Nov 19	176	
May 19	496	Dec 19	813	
Jun 19	161			
		Electricity Supply		
		0.13688 x 485 kWh		
		Total Supply Services		
		Other Charges/Adjustments		
		Paperless Billing Credit		
		Total Other Charges/Adjustments		
		-\$ 0.36		

1. Your electricity supplier will appear as First Point Power - Pepperell Community Elec.

2. Your Electricity Supply price will change to a Pepperell Community Electricity price.

Everything else remains the same!

National Grid continues to:

- Deliver your electricity with no interruption and address power outages.
- Send your electric bill and accept bill payments (this is the only electric bill you will receive as a participant).
- Provide fuel assistance, a low-income discount, and/or their Budget Plan if you are currently receiving these benefits.

The ONLY electricity supply program approved by and for the Town of Pepperell. If you don't see the Town Seal, it's not from the Town.

PepperellCommunityElectricity.com • 1-844-202-6299

