



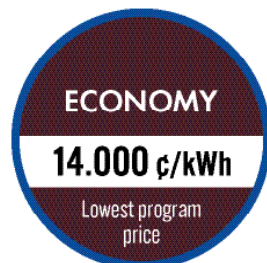
Chelmsford Choice is a Town electricity supply program that gives residents and business owners more choice and control over how we power our community while taking a big step toward achieving our sustainability goals. The program is a group electricity buying program that changes the electricity supply price on your National Grid electric bill. More than 200 other cities and towns in Massachusetts have similar programs.

Using the bulk buying power of our community, Chelmsford Choice provides:

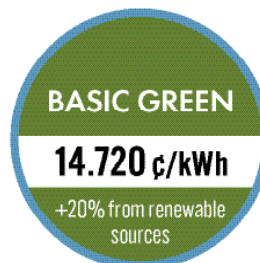
- Three options that balance sustainability and affordability
- Fixed pricing until November 2027
- The freedom to leave anytime with no fee or penalty

Chelmsford Choice has three options. Choose the one that's right for you.

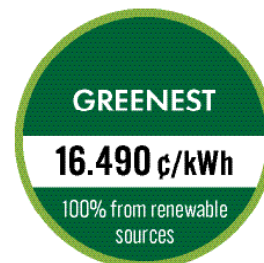
New program participants will be automatically enrolled in Basic Green. Economy and Greenest are available by request. Choose online or by phone.



OPTION



AUTO-ENROLL



OPTION

All program prices are fixed until November 2027.

While the program has a history of providing savings compared with National Grid, National Grid's future prices are unknown, so future savings cannot be guaranteed.

Most new electricity accounts will be eligible for automatic enrollment.

Have National Grid's Basic Service?

If you did not sign a private electricity supply contract, your account will be eligible for automatic enrollment within a few months, and you will receive a notification in the mail from the Town. State law requires the automatic enrollment model, but you are free to opt out before being automatically enrolled.

Have a private electricity supply contract?

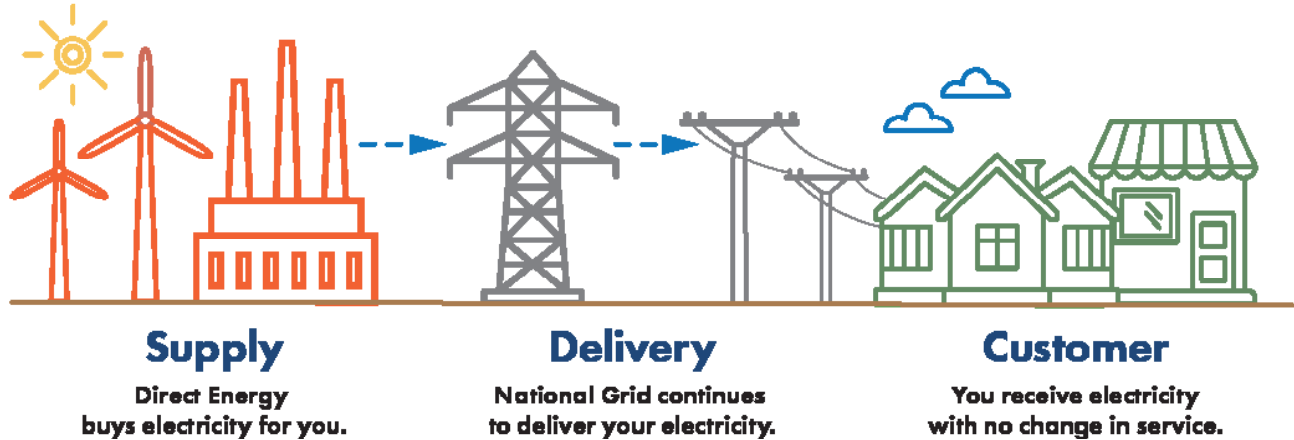
Your account will not be eligible for automatic enrollment, but you can request enrollment online at **ChelmsfordChoice.com** or by contacting customer support with the Town's program consultants at **844-483-5004**.

Participation is never required, and you are free to opt out at any time with no fee or penalty.

That means you can opt out before being automatically enrolled and remain with National Grid's Basic Service price, or you can try the program and opt out at any time in the future.

How Chelmsford Choice Works

Chelmsford Choice changes your electricity supplier and the price that National Grid uses to calculate the Supply Services charge on your bill, which is the part of the bill where you pay for the electricity you use. But Chelmsford Choice does not replace National Grid as Chelmsford's electric utility, and you will remain a National Grid customer.



Just two changes on your electric bill:

nationalgrid

Customer:
JOHN SMITH
100 A BOSTON STREET
CHELMSFORD, MA
01860

Service Address:
00125, 20116 New St, 00117

Account Number:
000040000

Account Status:
Active

Due Date:
Dec 27, 2024

Customer Information
To verify the supplier change, please contact your utility and provide the following information about your account:
Service Address: 00125, 20116 New St, 00117
Service Number: 000040000

Direct Usage History

Month	kWh	kWh	kWh
Nov 14	1115	1115	0
Nov 15	436	436	0
Nov 16	200	200	0
Nov 17	110	110	0
Nov 18	110	110	0
Nov 19	110	110	0
Nov 20	110	110	0
Nov 21	110	110	0
Nov 22	110	110	0
Nov 23	110	110	0
Nov 24	110	110	0
Nov 25	110	110	0
Nov 26	110	110	0
Nov 27	110	110	0
Nov 28	110	110	0
Nov 29	110	110	0
Nov 30	110	110	0
Nov 31	110	110	0

Supply Services

Supplier: **DIRECT ENERGY-CHELMSFORD CHOICE**
P.O. BOX 100
TULSA, OK 74101

Phone: 1-888-863-1122

Electric Supply: **0.14720** x 412 kWh

Other Charges/Adjustments

Expense Bill Inc. Credit

Total Other

1. Your electricity supplier will appear as **Direct Energy-Chelmsford Choice**.

2. Your Electricity Supply price will change to a Chelmsford Choice price.

**Everything
else remains
the same!**

National Grid continues to:

- Deliver your electricity with no interruption and address power outages.
- Send your electric bill and accept bill payments (this is the only electric bill you will receive as a participant).
- Provide fuel assistance or a low-income discount, if you are currently receiving these benefits.

The **ONLY** electricity supply program approved by and for the Town of Chelmsford. If you don't see the Town Seal, it's not from the Town.

ChelmsfordChoice.com | **844-483-5004**

