



# BEVERLY COMMUNITY ELECTRIC



Beverly Community Electric is a City electricity supply program that gives residents and business owners more choice and control over how we power our community while taking a big step toward achieving our sustainability goals. The program is a group electricity purchasing program that changes the electricity supply price on your National Grid electric bill. More than 200 other cities and towns in Massachusetts have similar programs.

Using the bulk buying power of our community, Beverly Community Electric provides:

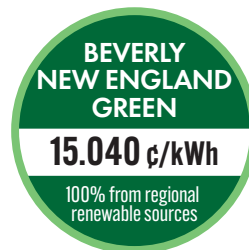
- 100% renewable electricity automatically.
- Stable prices that will not change until November 2027.
- The freedom to leave anytime with no fee or penalty.

## Beverly Community Electric has three options. Choose the one that's right for you.

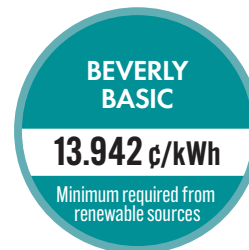
New electricity accounts will be automatically enrolled in Beverly Standard Green. Beverly New England Green and Beverly Basic are available by request. Choose online or by phone.



AUTO-ENROLL



OPTION



OPTION

### All program prices are fixed until November 2027.

While the program has a history of providing savings compared with National Grid, National Grid's future prices are unknown, so future savings cannot be guaranteed.

## Most new electricity accounts will be eligible for automatic enrollment.

### Have National Grid's Basic Service?

If you did not sign a private electricity supply contract, your account will be eligible for automatic enrollment within a few months, and you will receive a notification in the mail from the City. State law requires the automatic enrollment model, but you are free to opt out before being automatically enrolled.

### Have a private electricity supply contract?

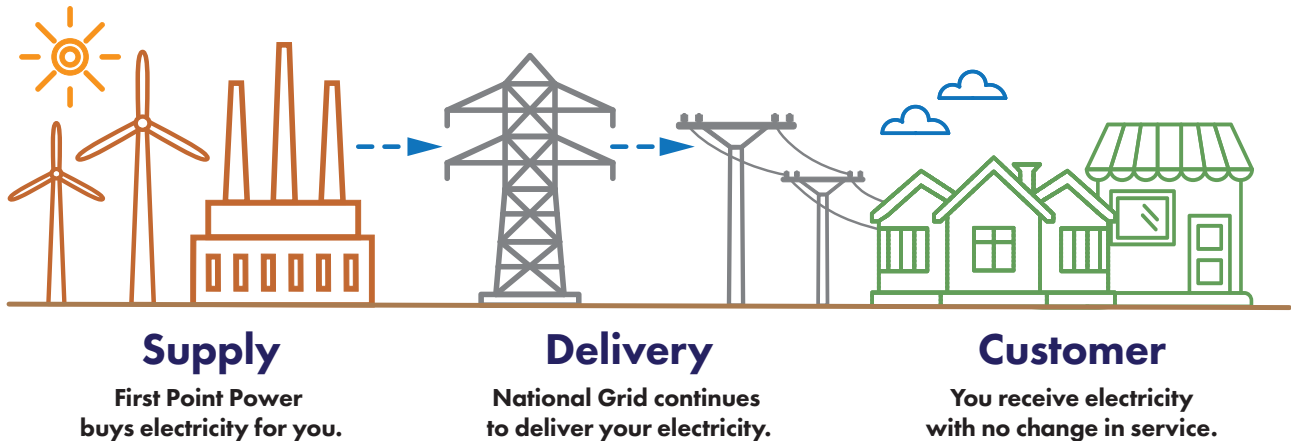
Your account will not be eligible for automatic enrollment, but you can request enrollment online at **BeverlyCommunityElectric.com** or by contacting customer support with the City's program consultants at **833-350-1631**.

**Participation is never required, and you are free to opt out at any time with no fee or penalty.**

That means you can opt out before being automatically enrolled and remain with National Grid's Basic Service price, or you can try the program and opt out at any time in the future.

# How Beverly Community Electric Works

Beverly Community Electric changes your electricity supplier and the price that National Grid uses to calculate the Supply Services charge on your bill, which is the part of the bill where you pay for the electricity you use. But Beverly Community Electric does not replace National Grid as Beverly's electric utility, and you will remain a National Grid customer.



## Two key changes on your electric bill:

The sample bill shows the following details:

- nationalgrid** logo
- SERVICE FOR:** JOHN SMITH, 1010 ANY STREET, ANYTOWN, MA 00000-0000
- BILLING PERIOD:** Dec 29, 2025 to Jan 26, 2026
- ACCOUNT NUMBER:** 00000-00000
- PLEASE PAY BY:** Feb 20, 2026
- Enrollment Information:** To enroll with a supplier or change to another supplier, you will need the following information about your account: Loadzone: NEMA, Acct No: 00000-00000, Cycle: 1, SYLV
- Supply Services:** SUPPLIER: BEVERLY COMMUNITY ELECTRIC-FIRST POINT POWER, 2000 CHAPEL VIEW BLVD, STE 450, CRANSTON, RI 02920. PHONE: 1-888-875-1711, ACCOUNT NO: 00000-00000
- Electric Usage History:** Table with columns: Month, kWh, Month, kWh. Data rows for Mar 21, Apr 21, May 21, Jun 21, Jul 21, Aug 21, Sep 21.
- Electricity Supply:** 0.14012
- Other Charges/Adjustments:** Paperless Billing Credit: -0.3, Total Other: -\$ 0.3

**1. Your electricity supplier will appear as Beverly Community Electric-First Point Power.**

**2. Your Electricity Supply price will change to a Beverly Community Electric price.**

**Everything else remains the same!**

### National Grid continues to:

- **Deliver your electricity** with no interruption and address power outages.
- **Send your electric bill** and accept bill payments (this is the only electric bill you will receive as a participant).
- **Provide a low-income discount** or fuel assistance if you are currently receiving these benefits.

The **ONLY** electricity supply program approved by and for the City of Beverly.  
If you don't see the City Seal, it's not from the City.

**BeverlyCommunityElectric.com • 833-350-1631**

